



MIL-DTL-38999 series

IV

Aluminium • Stainless Steel • Composite

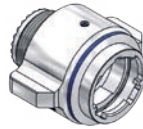


Rugged harsh environmentally sealed connectors, available in a wide range of Mil spec, commercial and composite constructions, plus full line of finishes, including black zinc nickel and PTFE nickel.

Key Features:

- Breech lock, quarter turn
- Contact type AS39029
- Scoop proof
- Environmentally sealed
- Hermetic versions
- Filter versions
- Spring fingers for EMI control

This data sheet represent a brief overview of the range available for MIL-DTL-38999 series IV connectors, should the version you require not be shown here please contact us.



Military Designation Part Numbering example

D38999 / 40 W B 35 P N

Connector Style - Series IV

40 = Wall mount receptacle | 42 = Box mount receptacle |
 44 = Jam nut receptacle | 46 - EMI Straight plug | 47 = Non EMI
 Straight plug | 49 = In-Line Receptacle

Material and Finish

C = Aluminium - Anodised | F = Aluminium - Electroless Nickel |
 G = Space grade Electroless Nickel | J = Composite - Chromate
 over Cadmium | K = Stainless Steel, passivated firewall insert |
 S = Stainless Steel - Electroless Nickel | T = Aluminium - Nickel/PTFE
 | W = Aluminium - Chromate over Cadmium | Z = Black Zinc-Nickel

Shell Sizes

9 (A), 11 (B), 13 (C), 15 (D), 17 (E), 19 (F), 21 (G), 23 (H), 25 (J)
 Numbers are Commercial and Letters are Military

Insert Arrangements

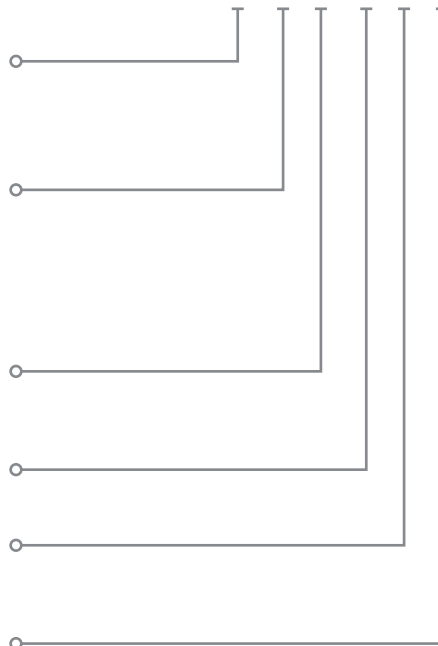
Contact us for full arrangements table or see table over

Contact Type (MIL-C-39029)

P = Pin | S = Socket | A = Same as 'P' but less contacts |
 B = Same as 'S' but less contacts

Insert Rotation

For full details refer to separate MIL arrangement charts.
 N = Normal (standard) | A = Highly popular | B = Limited availability
 | C thru U = Check for availability



| Shell Size / Insert | | Service Rating | Contact Size / Quantity | | | | | | Operating Voltage | |
|---------------------|----------|----------------|-------------------------|-----|-----|-----|-----|------|-------------------|------|
| Commercial | Military | | #8 Twinax | #10 | #12 | #16 | #20 | #22D | AC (RMS) | DC |
| 09-35 | A35 | M | | | | | | 6 | 400 | 550 |
| 09-98 | A98 | I | | | | | 3 | | 600 | 850 |
| 11-02 | B2 (B02) | I | | | | 2 | | | 600 | 850 |
| 11-05 | B5 (B05) | I | | | | | 5 | | 600 | 850 |
| 11-35 | B35 | M | | | | | | 13 | 400 | 550 |
| 11-98 | B98 | I | | | | | 6 | | 600 | 850 |
| 11-99 | B99 | I | | | | | 7 | | 600 | 850 |
| 13-04 | C4 (C04) | I | | | | 4 | | | 600 | 850 |
| 13-35 | C35 | M | | | | | | 22 | 400 | 550 |
| 13-98 | C98 | I | | | | | 10 | | 600 | 850 |
| 15-05 | D5 (D05) | II | | | | 5 | | | 900 | 1250 |
| 15-15 | D15 | I | | | | 1 | 14 | | 600 | 850 |
| 15-18 | D18 | I | | | | | 18 | | 600 | 850 |
| 15-19 | D19 | I | | | | | 19 | | 600 | 850 |
| 15-35 | D35 | M | | | | | | 37 | 400 | 550 |
| 15-97 | D97 | I | | | | 4 | 8 | | 600 | 850 |
| 17-02 | E2 (E02) | M | 2 | | | | | 38 | 400 | 550 |
| 17-06 | E6 (E06) | I | | | 6 | | | | 600 | 850 |
| 17-08 | E8 (E08) | II | | | | 8 | | | 900 | 1250 |
| 17-26 | E26 | I | | | | | 26 | | 600 | 850 |
| 17-35 | E35 | M | | | | | | 55 | 400 | 550 |
| 17-98 | E98 | M | 2 | | | | | 24 | 400 | 550 |
| 17-99 | E99 | I | | | | 2 | 21 | | 600 | 850 |
| 19-03 | F3 | M | 3 | | | | | | 400 | 550 |
| 19-04 | F4 | M | 4 | | | | | | 400 | 550 |
| 19-11 | F11 | II | | | | 11 | | | 900 | 1250 |
| 19-18 | F18 | M | 4 | | | 14 | | | 400 | 550 |
| 19-32 | F32 | I | | | | | 32 | | 600 | 850 |
| 19-35 | F35 | M | | | | | | 66 | 400 | 550 |
| 21-05 | G5 | M | 5 | | | | | | 400 | 550 |
| 21-11 | G11 | I | | | 11 | | | | 600 | 850 |
| 21-16 | G16 | II | | | | 16 | | | 900 | 1250 |
| 21-26 | G26 | M | 2 | | | | 23 | | 400 | 550 |
| 21-35 | G35 | M | | | | | | 79 | 400 | 550 |
| 21-39 | G39 | I | | | | 2 | 37 | | 600 | 850 |
| 21-41 | G41 | I | | | | | 41 | | 600 | 850 |
| 23-21 | H21 | II | | | | 21 | | | 900 | 1250 |
| 23-35 | H35 | M | | | | | | 100 | 400 | 550 |
| 23-53 | H53 | I | | | | | 53 | | 600 | 850 |
| 23-55 | H55 | I | | | | | 55 | | 600 | 850 |
| 23-97 | H97 | I | | | | 16 | | | 600 | 850 |
| 23-99 | H99 | II | | | | 11 | | | 900 | 1250 |
| 25-04 | J4 (J04) | I | | | | 8 | 48 | | 600 | 850 |
| 25-08 | J8 (J08) | M | 8 | | | | | | 400 | 550 |
| 25-11 | J11 | N | | 9 | | | 2 | | 230 | 270 |
| 25-19 | J19 | I | | | 19 | | | | 600 | 850 |
| 25-20 | J20 | N | 3 | | 4 | 13 | 10 | | 230 | 270 |
| 25-24 | J24 | I | | | 12 | 12 | | | 600 | 850 |
| 25-29 | J29 | I | | | | 29 | | | 600 | 850 |
| 25-35 | J35 | M | | | | | | 128 | 400 | 550 |
| 25-43 | J43 | I | | | | 20 | 23 | | 600 | 850 |
| 25-46 | J46 | I | 2 | | | 4 | 40 | | 600 | 850 |
| 25-61 | J61 | I | | | | | 61 | | 600 | 850 |

Please note that this list is intended as an overview only and does not contain all available planforms, if your required arrangement is not available please contact us.

All information provided is believed to be reliable. We advise however that customers should separately evaluate the suitability of our products for their particular application. IS-Rayfast give no guarantee in respect of the accuracy or sufficiency of the information presented and disclaim any liability regarding its use. Our responsibilities are only those listed in our Standard Terms and Conditions of Sale for these products. In no instance will we be liable for any eventual, indirect, or consequential damage or damages from the sale, resale, transfer, use or misuse of the product.

Tel: +44 (0)1793 616700 • Fax: +44 (0)1793 644304
uksales@is-rayfast.com • export@is-rayfast.com
www.is-rayfast.com
2 Lydiard Fields, Swindon, Wiltshire, SN5 8UB, UK.

